



Xemod 2008 - Build 1

Release Notes

August, 2008

Those release notes provide information about the latest version of Xemod, modelling software for enterprise engineering.

Information is provided on the following:

- | | |
|---|---|
| 1. From 'Essential Business Modeler' to 'Xemod' | 2 |
| 2. Upgrade instructions | 2 |
| 3. Solved issues | 3 |
| 4. Applied changes | 5 |



1. From 'Essential Business Modeler' to 'Xemod'

The modelling tool 'Essential Business Modeler' (shortened as 'EBM'), earlier delivered by Essmod Company, has been taken over by Xprise Business Solutions and is delivered from September 1st, 2008 under the name Xemod. Xemod is an acronym for **X**prise **E**nterprise **E**ngineering **M**odeler.

Xprise concentrates with Xemod on professionals that keep themselves up with enterprise engineering conform the DEMO methodology, in their own organization or as a consultant.

The first release of Xemod ('Xemod 2008 - Build 1') is mainly identical to EBM 1.5. See below for the list of solved issues and applied changes.

For more information on Xemod you can visit the Xemod website, reachable via www.xemod.nl, www.xemod.be or www.xemod.eu.

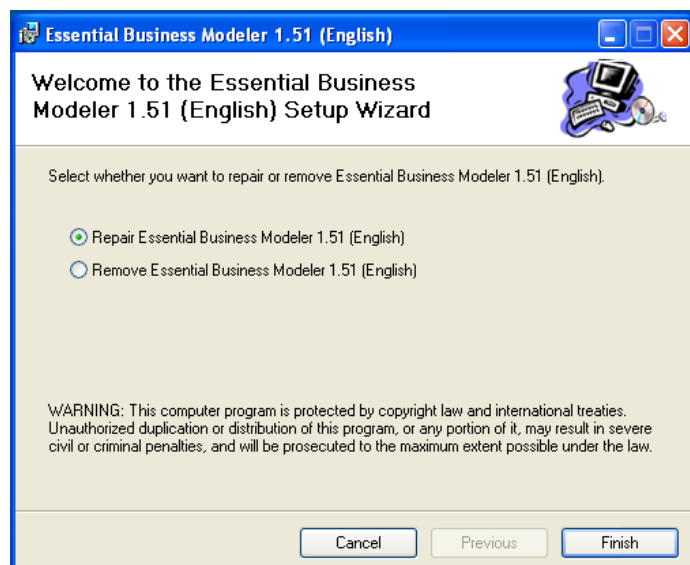
2. Upgrade instructions

For installing Xemod 2008 on a workstation, any version of EBM has to be removed from that workstation. To have a version of Xemod without memory limitations, a new license has to be installed, to be obtained from Xprise. Xemod can be downloaded from the Xemod website (www.xemod.nl).

Existing customers, namely companies or persons who bought EBM from Essmod and are known as such by Xprise, can get a licensed version of Xemod 2008 without additional costs.

2.1 Installation on Windows versions, other than XP

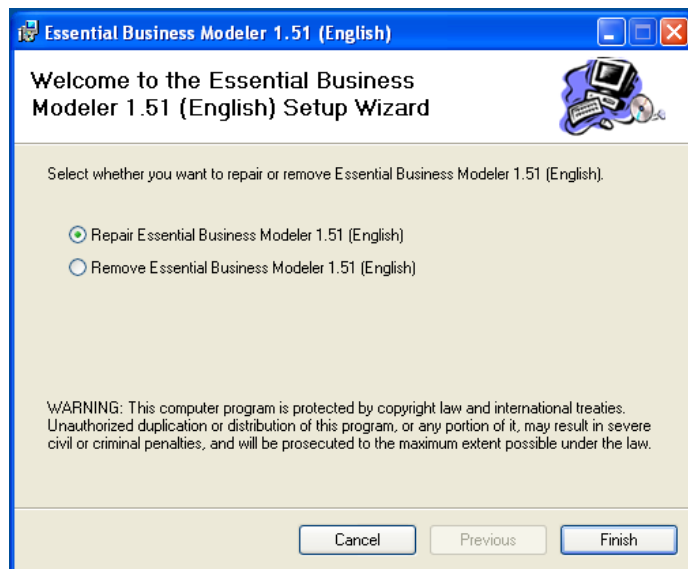
1. Uninstall EBM from your workstation via software configuration management of Windows.
2. Remove manually the program directory of EBM (default: 'C:\Program Files\Essmod15').
3. Download Xemod 2008 and install it. Note: whenever you get the screen on the right side when starting the installation of Xemod, it means that EBM is not uninstalled. Please abort the



installation of Xemod by clicking the button 'Cancel' and uninstall EBM conform the steps as are mentioned above.

2.2 Installation on Windows Vista

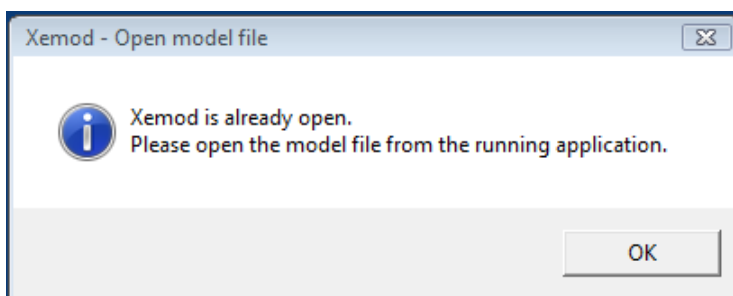
1. Uninstall EBM from your workstation via software configuration management of Windows Vista.
2. Remove manually the program directory of EBM (default: 'C:\Program Files\Essmod15').
3. Remove manually the directory ' C:\Users**<your login name>**\AppData\Local\VirtualStore\Program Files\Essmod15'
4. Download Xemod 2008 and install it. Note: whenever you get the screen on the right side when starting the installation of Xemod, it means that EBM is not uninstalled. Please abort the installation of Xemod by clicking the button 'Cancel' and uninstall EBM conform the steps as are mentioned above.



3. Solved issues

3.1 Corrupt file at opening two models

Previously, opening an emd-file when EBM was already open with an emd-file, lead to a corrupt file. This issue is solved by allowing only one instance of Xemod running. The following message will appear:

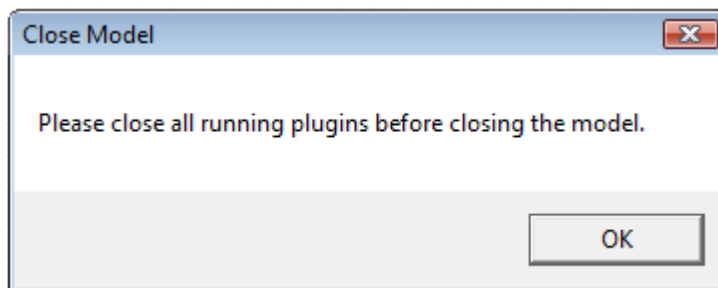


3.2 Modeler shuts down after opening two tables

Previously, when opening two tables (via the menu 'Tools > Show Table') EBM shut down. In Xemod, several tables can be opened at the same time.

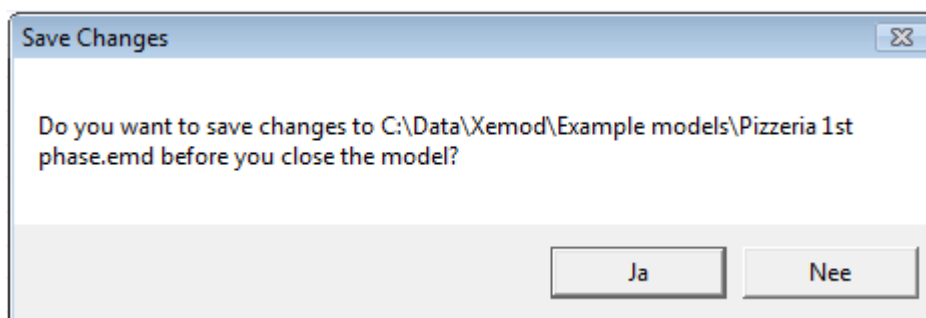
3.3 Plug-ins cause problems when a model is closed (Windows Vista)

When closing a model in EBM while a plug-in was running, in Windows Vista the file with the model got corrupted. Xemod allows only closing a file when no plugin is using it anymore. Related to this: plug-ins cannot be started anymore if there is no model opened in Xemod. The following message will be shown if a plug-in is running and a file is opened:



3.4 Data lost at closing a file

When closing a file, EBM didn't check whether the changes were made since the latest time the file was saved. Xemod asks the user always (when closing a file) whether he wants to save the file (see picture below).



3.5 Model to be closed before program could be closed

EBM obliged a user to first close a model before the application could be closed. Xemod can be closed when a model is open; Xemod will ask the user whether he wants to save the changes or not.

4. Applied changes

4.1 Names of methods, diagram and diagram elements

Inconsistency in names are removed and names are conform the term that are used by Jan L.G. Dietz in 'Enterprise Ontology. Theory and Methodology (2006)'. Old an new names are are listed below.

Methods

EBM 1.5	Xemod 2008
DEMO Engineering Methodology for Organizations (DEMO)	DEMO - Design & Engineering Methodology for Organizations
DEMO Based Organization Modeling	DBOM - DEMO Based Organization Modeling
Object Role Modeling (ORM)	ORM - Object Role Modeling
Event Driven Process Chains (EPC)	EPC - Event-driven Process Chains
Unified Modeling Language (UML)	UML - Unified Modeling Language

Diagrams

EBM 1.5	Xemod 2008
Interaction Diagram (Global)	Global Actor Transaction Diagram
Interaction Diagram (Detailed)	Detailed Actor Transaction Diagram
Process Step Diagram	Process Structure Diagram
Process Step Model	Process Structure Diagram

Diagram elements

EBM 1.5	Xemod 2008
System actor	Composite actor
Aggregated actor	Composite actor
Responder link	Executor link
Execution link	Executor link
System border	Organization boundary
System boundary	Organization boundary
Communication Act+Fact	Coordination Act+Fact
Communication Action	Coordination Act
Begin State	Activation
Inspection link	Information link

4.2 Default codes

The default code of composite actors and organization boundaries has been change from 'S..' to 'CA.'. Related to this has the layout of the button for composite actors been changed.
